



GALLOWAY AND SOUTHERN AYRSHIRE BIOSPHERE



unesco

Galloway & Southern Ayrshire
Biosphere Reserve
since 2012
Man and the Biosphere
Programme

STRATEGIC PLAN 2023 - 2033

OUR VISION

“To demonstrate our passion for living in a way that benefits people and nature.”

OUR MISSION STATEMENT

“The Galloway and Southern Ayrshire Biosphere promotes a balanced relationship between people and the natural environment, through establishing effective partnerships, community engagement, innovative projects, research and learning. Encouraging local communities to act collaboratively to build thriving sustainable societies in harmony with their natural surroundings.”

UNESCO WORLD BIOSPHERES

A Biosphere is a special designation awarded by the United Nations Educational, Scientific and Cultural Organisation (UNESCO) under the Man and the Biosphere (MAB) Programme. First developed in the 1970s the original MAB programme was focused on conservation and research of a range of ecosystems. In 1995, following the Seville Strategy this was broadened out to include sustainable development relating directly to communities and businesses. Today the MAB Programme promotes activities for sustainable use and conservation of biological diversity and for the improvement of the relationship between people and their environment globally.

Biospheres are areas of terrestrial and coastal or marine ecosystems, or a combination thereof, that are recognised internationally within the MAB Programme. Biospheres are nominated by national governments and remain under their jurisdiction.

UNESCO Biospheres are designated to inspire communities to work together in creating a future we can all be proud of, connecting people with nature and cultural heritage, while strengthening the local economy. They must fulfil three aims:

- **CONSERVATION** – of biodiversity and cultural diversity;
- **DEVELOPMENT** – that is socio-culturally and environmentally sustainable;
- **LOGISTIC SUPPORT** – underpinning development through research, monitoring, education and training.

Biospheres have three interrelated geographical zones that aim to fulfil the three functions (conservation, development, logistic support):

- **THE CORE AREA(S)** comprises a strictly protected ecosystem that contributes to the conservation of landscapes, ecosystems, species, and genetic variation.
- **THE BUFFER ZONE** surrounds or adjoins the core areas and is used for activities compatible with sound ecological practices that can reinforce scientific research, monitoring, training, and education.
- **THE TRANSITION AREA** is the part of the Biosphere where the greatest activity is allowed, fostering economic and human development that is socio-culturally and ecologically sustainable.

In July 2012 after an extensive local engagement process involving communities, businesses, local organisations and public sector bodies Galloway and Southern Ayrshire was designated as the first new style UNESCO Biosphere in Scotland.

2022 PERIODIC REVIEW FINDINGS

All international Biospheres have to carry out a comprehensive decennial Periodic Review for UNESCO, to track progress towards goals and in order for their designation to be renewed. Galloway and Southern Ayrshire Biosphere's Periodic Review was conducted in 2022 involving widespread stakeholder engagement and desktop analysis.

A key aspect of the Biosphere designation is community engagement and empowerment. The communities within the GSA Biosphere have seen significant changes over the last ten years that have led to increased challenges. In the northeast of the Biosphere, the decline in heavy industry and especially coal mining that started in the 1980s has continued over the last 10 years, with employment in open cast mining in particular declining significantly. In other areas, financial 'austerity' has led to a reduction in public sector jobs, with many residents having to travel significant distances to work. As in much of rural Scotland, factors including poor transport links make isolation an important issue for people living in rural parts of the Biosphere.

The demographic of the Biosphere remains challenging with a notable outward migration of younger people seeking education and employment opportunities and the inward migration of older people drawn by attractive countryside, a rich cultural offering, and until recently, competitive house prices.

The key economic sectors in the Biosphere continue to be forestry, agriculture, tourism and energy production. A high proportion of employment is in the land-based sectors, with 8% of all adults employed in relevant primary industries. Despite the pressures that tourism has faced during the Covid pandemic it is still a key part of the local economy and the UNESCO Biosphere designation is recognised as an opportunity to stimulate new enterprise in leisure and hospitality. The Biosphere programme of business engagement was recognised by many business owners as having been significant in supporting them on their sustainability journey and was an area they highlighted as essential to continue to develop and promote.

Renewable energy production continues to divide opinion. While some communities embrace the opportunity offered by community benefit funding, others see the negative landscape impacts of turbines and associated infrastructure as too great to be mitigated by money. There are 11 windfarms in operation within the Biosphere with another 19 approved for construction and more currently being scoped and/or planning applications submitted. The size of wind turbines has shown a marked increase from an average of 75m in height during the 1990s to applications for 250m+ today; with local hills only averaging 600m in height, this is felt by many to be out of scale with the local landscape. To date all such developments have been within the Transition Area of the Biosphere – where sustainable development is actively supported – but increasingly there is a push for larger developments within the Buffer Area. This is seen by the Biosphere's Partnership Board as conflicting with the natural and cultural objectives of the UNESCO designation.

The current land cover within the GSA Biosphere is currently witnessing a series of changes due to a combination of human and climatic factors. Traditional low intensity farming is being replaced with intensive beef and dairy farming, and in the uplands hill farms are being replaced by coniferous plantations. The creation of coniferous plantations far outweighs the creation of new broadleaved or native woodlands: it accounts for 85% of all new woodland within the Biosphere. This increase is driven by the increased demand for timber and carbon offsetting, and continues to alter the composition of woodland and patterns of land use across the Biosphere area. This economically-driven transition, in

combination with environmental decline and a changing climate, is leading to a decline in the amount of traditional land cover types and the habitats and biodiversity associated with them.

The quality and variety of the Biosphere's different habitats is one of the features most commonly mentioned by stakeholders when asked about the attraction of the region, and has led the Biosphere to spend much of the previous ten years advocating for better protection and enhancement of the natural environment, to ensure that it can continue to provide inspiration to future generations. Core to this objective is re-establishing a more benign and harmonious relationship between people and nature by developing, advocating, and supporting initiatives that promote and celebrate more sustainable and better integrated land use on a landscape scale.

Those participating in the Periodic Review felt an important role for the Biosphere over the next ten years was to help amplify the voice of local communities, to support them in celebrating the region's history, culture and rural heritage, and to help deliver a just transition that will support more resilient communities. A key aspect of this was around engaging with young people through education for sustainability and by providing opportunities for them to become more involved in the UNESCO Biosphere.

A key objective for the Biosphere's Partnership Board was to use the Periodic Review to review and update geographical boundaries. This was conducted with a particular focus on communities and businesses located in the Rhins of Galloway who had repeatedly expressed concern at having been left out of the original Biosphere designation. A separate piece of public engagement work focusing specifically on that area received almost universal support for 'Bringing in the Rhins'. It also highlighted a desire to include the marine environment, which led to a wider survey of stakeholders across the whole of the Biosphere which demonstrated widespread support for pushing the Biosphere boundaries out to the 12 mile nautical limit. This recommendation was submitted to UNESCO as part of the Periodic Review process and a decision is expected in summer 2023.



GOVERNANCE OF THE BIOSPHERE

The Galloway and Southern Ayrshire Biosphere Partnership was established as a Scottish Charitable Incorporated Organisation (SCIO) in 2013.

The Galloway and Southern Ayrshire Biosphere Charter sets out the principles which underpin the Biosphere:

- Help conserve the natural resources of the Biosphere
- Support the economy to benefit people and nature
- Promote cultural heritage & local products
- Contribute to the health and wellbeing of the community
- Develop knowledge, understanding and promote research
- Raise awareness of the Galloway and Southern Ayrshire Biosphere

Throughout its designation the GSA Biosphere has been guided by a Partnership Board whose members are representatives of the agencies, businesses, communities and organisations who live and work in the Galloway and Southern Ayrshire Biosphere.

An Audit Risk and Governance group comprising of a number of Trustees and staff members has been established, whose role is to regularly review and critique finance, governance and risk. This ensures transparency and risk mitigation in all GSAB operations.

The activities of the Biosphere are delivered by a team of nine full time equivalent staff.

They are currently supported by two fixed-term development positions, aimed at young people living in or near to the Biosphere with an interest in sustainability and who are looking for an opportunity to start on the career ladder.

As the Biosphere develops, fixed term contract officer positions are anticipated to aid in project delivery.



GSAB STRATEGIC PLAN 2023-2033

The Strategic Plan sets out GSAB's overall vision and mission for the next ten years. The document is intended to be aspirational and agile, providing a clear overview of what GSAB aims to achieve, but with the ability to be flexible around changes and developments which will undoubtedly occur in the decade ahead. The document sets out:

Our PURPOSE – our vision and mission

Our WAY – how we will deliver our strategic aims through our People, Finance and Communications

Our IMPACT – how we will make a difference across the Biosphere area, in terms of Community, Business, Research & Learning, and Natural Resources.

The Strategic Plan, alongside the State of the Biosphere Report, will be used to inform current and potential funders about exactly what GSAB aims to achieve and how our aspirations might align with theirs.

The Strategic Plan runs for 10 years, with a midterm review point at the 5-year mark.

GSAB OPERATIONAL PLAN 2023-2027

The Operational Plan sets out in more detail how GSAB plans to achieve the strategic aims set out in the Strategic Plan. The Operational Plan will run for 3+2 years, with the first 3 years being fully costed and the latter 2 years estimated. The document sets out the activities, projects, timelines, costs, and resources required to deliver GSAB's strategic aims.

The Operational Plan also sets out whether activities fall within GSAB's core function and funding or whether they are project based, requiring specific funding or external resources. Furthermore, detail is provided on partner organisations with whom GSAB will engage in the delivery of projects.

Within the Operational Plan, assumptions are made about future funding streams, and these assumptions are regularly reviewed and revised during the Operational Plan cycle. Some elements of the Operational Plan may not yet have funding determined and, as a result, the plan must be considered a flexible working document, which drives the funding requirements over that 5-year period.

The Operational Plan informs the activities of all individual team members and Trustees, with team objectives and individual objectives both cascading from the plans set out in this document.

Progress against the Operational Plan is reported to the Partnership Board on a quarterly basis.

PRIORITISATION

Over such a long period of time it is essential that whilst being aspirational in its aims and objectives the Biosphere is also pragmatic about how it prioritises activity against its resource capabilities. All activity will be considered against the following principles:

1. How does it contribute to delivery of regional, national, or international policy directives and the plans of our core funders or strategic partners?
2. How does it help raise the profile of GSAB either regionally, nationally or internationally?
3. How does the initiative help further the financial viability of the Biosphere?

OUR LEGACY

Our ambition is to ensure that in decades to come, we can look back and see that what we have done today to address the climate and biodiversity crisis has had a positive and meaningful impact on future generations.

We want the Biosphere to be seen as a world class environment, valued within communities, part of everyday life, embedded in businesses, and at the heart of lifelong learning. We want the people of the Biosphere to be continually innovating, leading the way towards greater sustainability and showing that, when people collaborate, we can make a difference to climate and biodiversity resilience.

We want the communities within our Biosphere to be dynamic and sustainable places to live and work, where people feel empowered and able to safeguard their natural environment. We hope that the Biosphere's principles are embedded within the school curriculum and that the area is a shining example, nationally and internationally, of a balanced relationship between people and the natural environment. We want the region to be clearly on the map as a 'go to' destination for sustainable business and community-led tourism. We hope our land and seascape will be a rich mosaic of different uses, contributing to restoring biodiversity, addressing climate change and providing a sense of wellbeing to the people who live here.

We hope that the Biosphere continues to connect people and facilitate collaboration, providing empowering and inspiring opportunities for people to work together towards the common goal of sustainability. In years to come, we hope our team, trustees, funders, partners and everyone who has supported us will feel proud of the role they played in achieving this.

A VISION FOR GALLOWAY AND SOUTHERN AYRSHIRE UNESCO BIOSPHERE IN 2050

In 2019/20 the Biosphere worked in partnership with Edinburgh University and Forest Research to consider the challenges faced by the Biosphere, mainly around land use but also the associated social and economic issues. This research resulted in the Vision below, produced by the stakeholders of Galloway and Southern Ayrshire Biosphere and describing the type of place in which they aspired to live and work by 2050.

The Biosphere is a diverse, mixed and integrated living and working landscape. It supports a wide range of innovative low carbon and biodiversity friendly land-based activities including farming, forestry, tourism, and nature conservation. The Biosphere is recognised internationally as a region that demonstrates how sustainable development is good for people, the environment and the local economy.

The Biosphere is an excellent place to live and work. Better digital and physical infrastructure, public transport and affordable low-carbon timber housing will support the local economy, making the Biosphere an attractive and pleasant home for all age groups. Employment opportunities and accessibility retain those who have grown up locally and stimulate inward migration from folk who left the region and incomers charmed by the Biosphere's reputation as an attractive and innovative rural community.

The Biosphere has a strong identity. Natural and cultural heritage sites and local traditions and culture are respected and celebrated, strengthening sense of place and inspiring local arts and culture. Pride and knowledge of natural and cultural heritage drives the Biosphere's reputation for nature-based tourism, traditional crafts and local art, and regional food which provide an important contribution to the Biosphere's economy.

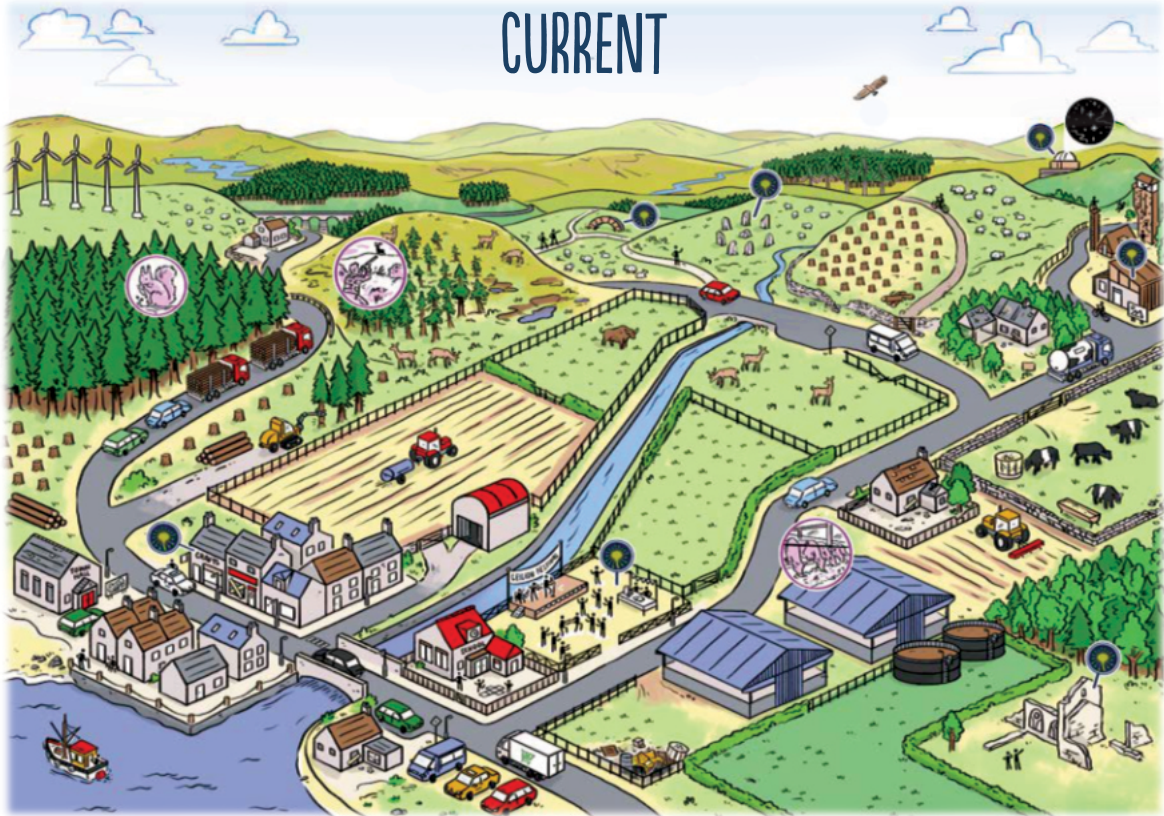
Land uses are integrated to provide multiple benefits and support biodiversity and carbon storage. Environmental protection upheld and conservation targets are achieved. Degraded peatland is restored, and existing forest plantations restructured to increase biodiversity and amenity value. Any additional woodland is carefully considered to maximise benefits (climate mitigation, biodiversity, jobs, timber, and recreation opportunities) and avoid negative impacts on the open landscape character and local infrastructure.

Local food, timber and energy provides many local needs. Less imported food and timber reduces carbon emissions from transport and support local employment. A local circular economy maximises value and environmental standards and minimises waste. Energy needs are met with local community and household renewable energy generation. Mixed 'productive' woodlands provide quality timber, including native hard woods that support local industries.

Cooperation, collaboration and consensus help achieve integrated land use. Regional partnerships identify priorities and help translate national priorities into what is needed and suitable for the Biosphere. Where there are competing land use demands, changes are properly guided, scrutinised, assessed and justified to ensure that the future outcome is greater than before. Regulations, incentives and support are aligned to favour mixed and integrated land use that provides multiple social, environmental and economic benefits.

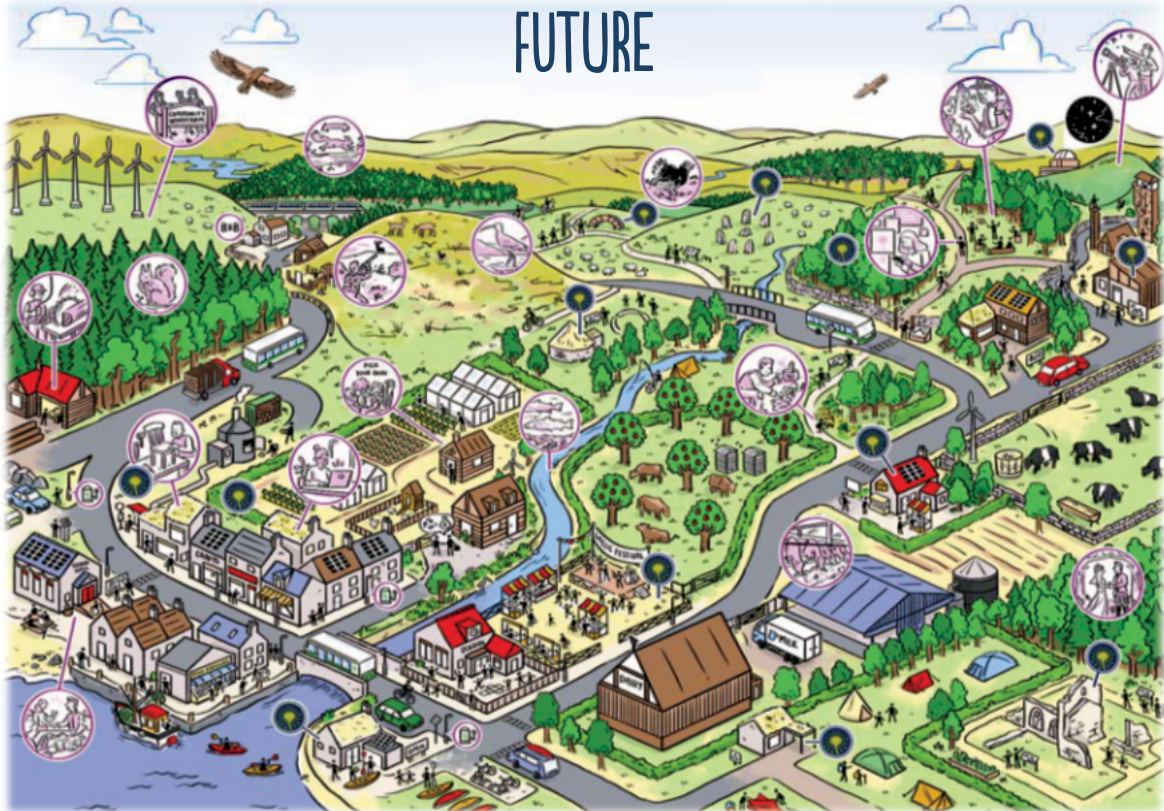
GALLOWAY & SOUTHERN AYRSHIRE BIOSPHERE

CURRENT

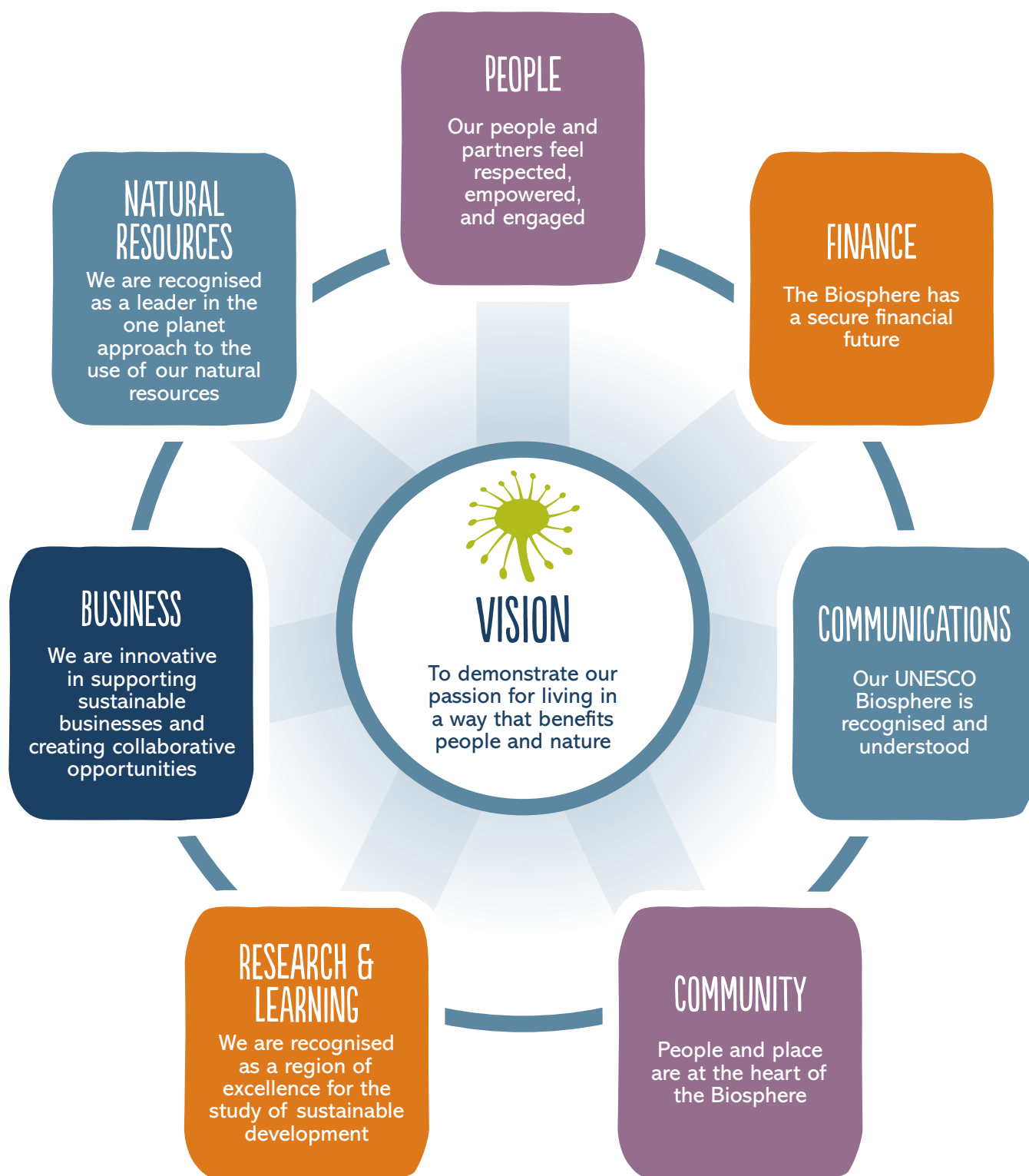


GALLOWAY & SOUTHERN AYRSHIRE BIOSPHERE

FUTURE



VISION AND AIMS





HOW WE OPERATE: PEOPLE

OUR VISION	Our people and partners feel respected, empowered, and engaged.
OUR CONTEXT	People, and a participatory governance approach, are at the heart of UNESCO Biospheres worldwide. By bringing together the collaborative efforts of employees, Trustees and external partners who work or live in the Biosphere we can achieve a common goal of a more sustainable relationship between people and the environment. The Biosphere follows the principles of a being a Fair Work employer in the way we engage with staff, volunteers and partners. Staffing has increased notably in recent years but to do justice to the full extent of the Biosphere it must continue to grow and offer secure long term employment.
OUR AIMS	<ul style="list-style-type: none"> • We will create an inclusive, people-centred culture, where our people and partners work collaboratively towards GSAB's success. • We will continue to contribute to a healthier, wealthier, and more inclusive local society by offering employment in line with Fair Work principles. • We will create opportunities for staff and Trustees to develop and use their skills and knowledge, so that individuals are recognised as, and are respected for being, experts in their field. • We will create a culture where the views of our people and partners are listened to and where performance, productivity and innovation are actively encouraged. • We will actively seek to collaborate with partners and strengthen the Biosphere through our combined skills and experience. • We will encourage a diverse range of people and skills on our Board and provide opportunities for Trustees to maximise their contribution.
OUR ASPIRATION	The Biosphere team is recognised as being highly skilled and successful in the delivery of the Biosphere ethos locally, nationally and internationally. As our Biosphere grows and flourishes, so do our people, building engagement and opportunity for everyone.
HOW WE MEASURE SUCCESS	<ul style="list-style-type: none"> • GSAB is acknowledged as an organisation which offers opportunity, respect and fulfilment for staff and trustees • There is evidence that GSAB is recognised for its skill in establishing collaborative partnerships to work towards common goals.

HOW WE OPERATE: FINANCE

OUR VISION	The Biosphere has a secure financial future.
OUR CONTEXT	Over the last ten years the Biosphere has sought to demonstrate how the largely modest funding from our public sector and local authority providers has benefited the entire region. We have used our funding to support a diverse range of communities and businesses to work in harmony with their natural surroundings and to provide a springboard for growing development and prosperity across Galloway and Southern Ayrshire.
OUR AIMS	<ul style="list-style-type: none"> • We will work to attract funding from diverse sectors and organisations, to reinforce our existing public sector funding streams. • We will create an attractive proposition which appeals to future investors, based on a shared belief in our overall vision. • We will develop relationships with businesses and corporate organisations both within and outside of the Biosphere for potential future funding. • We will develop and offer a proposition which attracts funding from individuals, both within and outside of the Biosphere. • We will identify and develop chargeable services which generate income, but which are in-keeping with the Biosphere's vision and principles.
OUR ASPIRATION	The future of the Biosphere is assured, both through a growing ability to generate its own income, and through solid and established mechanisms to secure the continuance of ongoing funding support from a diverse range of public and private sector organisations, trusts and people. The wider societal benefits of investing in the Biosphere, to ensure a healthier and greener future for everyone in the region, are clear and established.
HOW WE MEASURE SUCCESS	<ul style="list-style-type: none"> • GSAB is funded on an ongoing and secure basis by a diverse range of sources. • GSAB is able to demonstrate the additional economic value that GSAB brings to the region. • GSAB has a clear proposition, aligned with prevailing thought, which attracts inward investment. • GSAB is recognised as a key strategic delivery partner by its funders and stakeholders, working in partnership to deliver key projects and common goals.

HOW WE OPERATE: COMMUNICATIONS

OUR VISION	Our UNESCO Biosphere is recognised and understood locally, nationally, and internationally.
OUR CONTEXT	Whilst we have developed a clear brand which, supported by our UNESCO designation, is gaining increasing recognition both within and outside of the Biosphere, we recognise that more needs to be done if we are to really make the most of it. We have a good online presence but recognise we can do more through traditional media and enhanced networking that will engage with new audiences locally, nationally and internationally.
OUR AIMS	<ul style="list-style-type: none"> • We will use our communications to maintain a high profile and increase understanding of the Biosphere and what we stand for. • We will use our communications to gain recognition as innovators in our field and to be at the forefront of the discussion about sustainable development. • We will continue to develop opportunities to get the best value from networking and sharing of knowledge. • We will use our communications to encourage connection and collaboration between people, business and community within and beyond the Biosphere area.
OUR ASPIRATION	The Biosphere is recognised as an exemplar region, leading on innovative approaches to sustainable development that others wish to learn from. The UNESCO Biosphere brand is widely recognised and puts Galloway and Southern Ayrshire on the map. People understand what the Biosphere is and are advocates for the benefits it brings. The people of the region align their own values with those of the Biosphere and they talk passionately about how it enhances their lives.
HOW WE MEASURE SUCCESS	<ul style="list-style-type: none"> • The UNESCO Biosphere brand and identity is widely recognised and understood. • GSAB is seen as a strategic partner locally, nationally and internationally for initiatives around sustainability. • Individuals, businesses and communities showcase their advocacy of the Biosphere and champion their connections with the Biosphere's strategic goals.

WHAT WE DO: NATURAL RESOURCES

OUR VISION	The Biosphere is recognised as leader in the one planet approach to the use of our natural resources.
OUR CONTEXT	For over 10 years, the Biosphere has worked to raise awareness, share knowledge, and influence land use change. We have hosted public events and research, and promoted the use of nature-based solutions as an integrated approach to sustainable land management, which encourages the protection of priority species and habitats.
OUR AIMS	<ul style="list-style-type: none"> • We will work to support sustainable land and marine management that benefits both climate and biodiversity. • We will support and promote the restoration of peatland across the Biosphere. • We will work in partnership to support the delivery of payments for ecosystem services that benefit business, land managers and the environment. • We will work to support and celebrate the traditional management practices of land and sea that are good for nature and have shaped the communities of the Biosphere. • We will work to connect and restore habitats and ecosystems across the Biosphere.
OUR ASPIRATION	The land and seascape of the Biosphere is rich and varied with a mosaic of complimentary different uses, which are all contributing to restoring biodiversity and addressing climate change. Farmers, foresters and fishermen are embracing a more balanced and integrated approach to land and marine management. The cultural associations are celebrated and enhanced, attracting people and opportunity to the Biosphere.
HOW WE MEASURE SUCCESS	<ul style="list-style-type: none"> • GSAB has supported the development and delivery of landscape scale initiatives that deliver for both society and the environment. • There is a more balanced and integrated approach to land and marine management within the Biosphere. • Cultural associations and traditional ways of living and working on the land bring new opportunity to the area. • Natural capital is providing a positive contribution to the GSAB operations.

WHAT WE DO: COMMUNITY

OUR VISION	People and place are at the heart of the Biosphere.
OUR CONTEXT	We have a population of over 100,000 in the Biosphere largely living in small remote rural communities with associated challenges of poor accessibility and connectivity, a low wage economy and an ageing demographic. Over the last ten years we have engaged with individuals, local communities and interest groups across the Biosphere, facilitating discussions about sustainability, their local natural and cultural environments and how they can engage with addressing the climate and biodiversity emergencies. We have developed a portfolio of scalable frameworks and toolkits which are internationally acclaimed, and we encourage more communities and organisations to join this discussion.
OUR AIMS	<ul style="list-style-type: none"> • We will continue to support and develop our Placemaking approach in the communities of our Biosphere. • We will work with our communities to deliver a just transition that gives a fairer, greener future for all. • We will amplify the rural voice by listening to and supporting our many and varied communities in their responses to the challenges and opportunities that affect them. • We will work to grow our Biosphere communities and develop connections within and between them.
OUR ASPIRATION	Our communities are dynamic sustainable places to live, work and raise a family. Communities value being part of the Biosphere and feel empowered and able to safeguard their own natural environment and heritage. Communities are made stronger through the Biosphere's facilitation of collaborative working, sharing experiences and learning from each other.
HOW WE MEASURE SUCCESS	<ul style="list-style-type: none"> • Communities seek the input of GSAB in safeguarding the natural and cultural heritage of the Biosphere. • GSAB is acknowledged as enabling rural development • Communities within GSAB have committed to understanding and addressing the climate and biodiversity emergencies. • There is evidence of shared working and learning within and between Biosphere communities.

WHAT WE DO: BUSINESS

OUR VISION	The Biosphere is recognised for its innovation in supporting sustainable businesses, entrepreneurship and creating opportunities for collaboration.
OUR CONTEXT	The Biosphere has succeeded in creating a dynamic, wide, and varied network of businesses from a variety of different sectors, who all have a shared belief in sustainability. We have put in place a collaborative framework for businesses to support and learn from each other, and to continue to demonstrate their sustainable credentials as they grow.
OUR AIMS	<ul style="list-style-type: none"> • We will champion and support the sustainable aspirations of Biosphere businesses by building knowledge and understanding. • We will build on our UNESCO designation to develop a stronger regional brand, positioning southwest Scotland as a place for sustainable tourism. • We will create opportunities to support the growth of diverse business sectors through collaboration, cross-sectoral networking and peer-to-peer learning. • We will continue to facilitate partnerships that support sustainable business development and contribute to a wellbeing economy.
OUR ASPIRATION	The Biosphere is recognised as a region with a high concentration of sustainable business and a 'go to' destination for sustainable and community-led tourism. Businesses value being part of the Biosphere, and business networks are stronger through facilitation by the Biosphere, resulting in organic, self-perpetuating growth. The Biosphere is a shining example of how the economy can work in the service of people and planet.
HOW WE MEASURE SUCCESS	<ul style="list-style-type: none"> • There is evidence of a growing and collaborative network of Biosphere Certification Mark businesses. • There is evidence that the UNESCO brand positions the Biosphere as a 'go to' destination for sustainable and community led tourism. • There is evidence that GSAB creates value to business in the Biosphere.

WHAT WE DO: RESEARCH & LEARNING

OUR VISION	The Biosphere is recognised as a region of excellence for researching and practising innovative approaches to sustainable development.
OUR CONTEXT	With 94 schools in the Biosphere there is a recognised opportunity to engage with young people on the sustainability agenda. Despite not having any higher education provision in the Biosphere we have actively engaged with a wide range of academic institutions on all types and levels of research, learning and project delivery. We have also been proactive in the development and delivery of lifelong learning opportunities amongst our stakeholder groups and as part of the wider Biosphere network.
OUR AIMS	<ul style="list-style-type: none"> • We will develop strong partnerships with academics to promote the Biosphere as a place of research and learning. • We will champion lifelong learning for individuals, communities, and businesses in the Biosphere. • We will support the delivery of education for sustainable development. • We will use our position as a region of excellence in sustainable development to shape and influence policy direction.
OUR ASPIRATION	The Biosphere is recognised a place of learning, where academic institutions actively engage with the UNESCO designation in their applied research that delivers benefits for local communities and businesses. Local educational establishments use the Biosphere for teaching. The Biosphere's contribution to policy development is recognised.
HOW WE MEASURE SUCCESS	<ul style="list-style-type: none"> • Academic institutions actively engage the Biosphere in their applied research, with benefits for conservation, communities and businesses. • There is evidence that the Biosphere and sustainability is embedded within the school and college curriculum. • There is evidence that the Biosphere's contribution to policy development is recognised. • GSAB contributes to the international Biosphere network to share learning and best practice.



GALLOWAY AND
SOUTHERN AYRSHIRE
BIOSPHERE

[INFO@GSABIOSPHERE.ORG.UK](mailto:info@gsabiosphere.org.uk)

[WWW.GSABIOSPHERE.ORG.UK](http://www.gsabiosphere.org.uk)

REGISTERED SCOTTISH CHARITY SC044137



unesco

Galloway & Southern Ayrshire
Biosphere Reserve
since 2012
Man and the Biosphere
Programme

